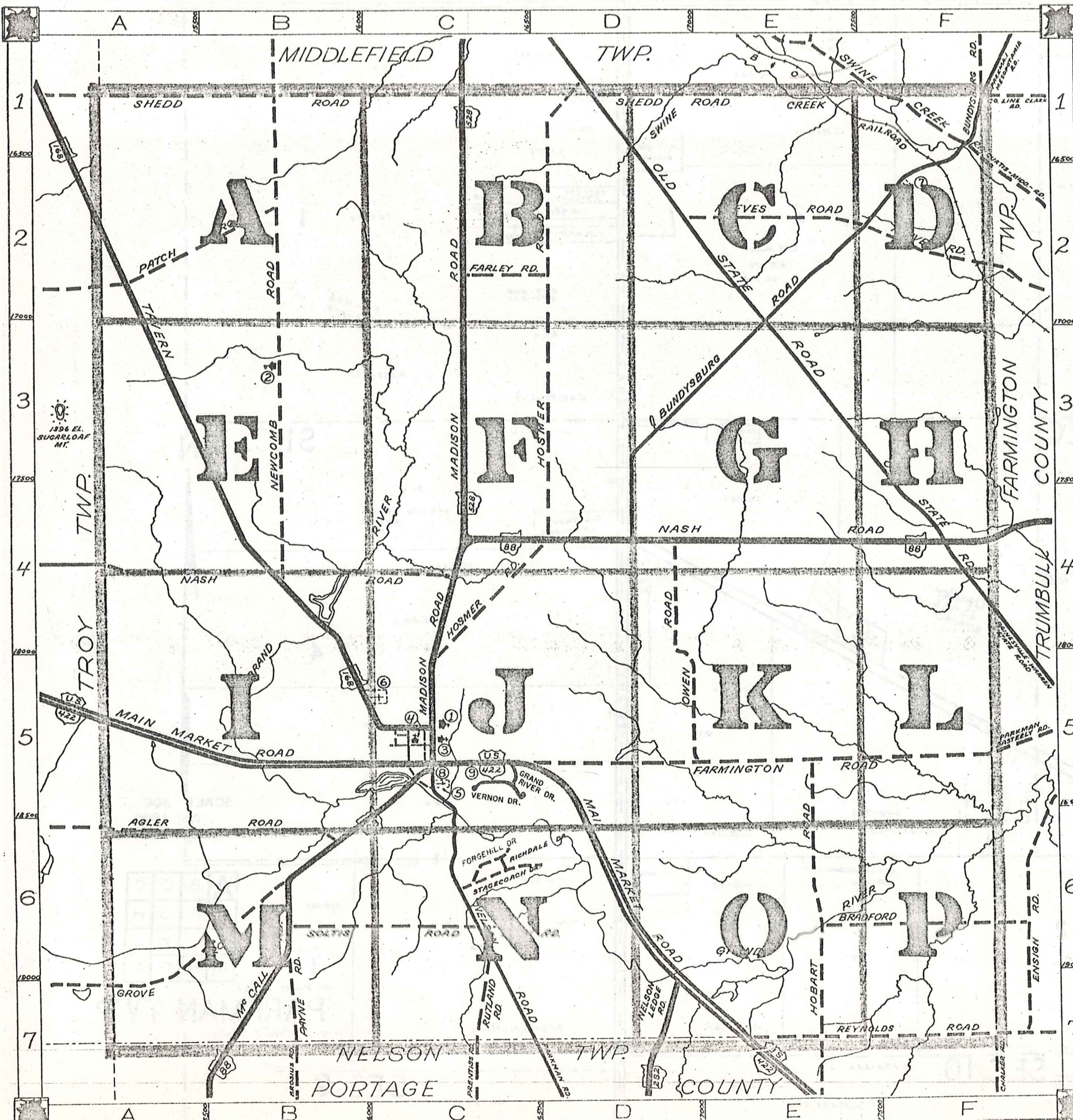


# ROAD INDEX



A	AGLER RD.	A6-B6	J	R cont.
B	BRADFORD RD.	E6-F6	K	S
	BUNDYSBURG RD.	D4-F1		SOLTIS RD. B6-C6
				SHEDD RD. A1-F1
				STAGECOACH DR. C6
				SWINE CREEK RD. F1
C	CHURCH ST	C5	L	T
	CENTER ST	C5		TAVERN RD. A1-C5
D	DOTY RD.	C-6	M	U
			MADISON RD. C1-C5	
			MAIN MARKET RD. A5-E7	
			MC CALL RD. B7-C5	
			MILL RD. C5	
E			N	V
			NASH RD. C4-F4	VERNON DR. C5
			NELSON LEDGE RD. D7	
			NELSON RD. C5-C7	
			NEWCOMB RD. B1-B4	
F	FARLEY RD.	C2-D2	O	W
	FARMINGTON RD.	D5-F5		WEST PARK C5
	FORGEHILL DR.	C6		WEST ST. C5
			OLD STATE RD. D1-F4	
			OWEN RD. D4-D5	
G	GROVE RD.	A7-B6	X	
	GRAND RIVER DR.	C5		
			P	Y
			PATCH RD. A2-B2	
			PAYNE RD. B6-B7	
H	HOBART RD.	E7-E5	Q	Z
	HOSMER RD.	C4-D1		
			R	
			REEVES RD. E2-F2	
			REYNOLDS RD. E7-F7	
			RICHDALE DR. C6	
			RUTLAND RD. C6-C7	

- ① PARKMAN ELEMENTARY SCH.
- ② AMISH SCHOOL
- ③ PARKMAN CONGREGATIONAL CH.
- ④ ST. EDWARDS CHURCH
- ⑤ OLD CEMETERY
- ⑥ OVERLOOK CEMETERY
- ⑦ CEMETERY
- ⑧ UNITED STATES POST OFFICE
- ⑨ PARKMAN VOL. FIRE DEPT.
- ⑩

**PARKMAN TOWNSHIP**  
**360**

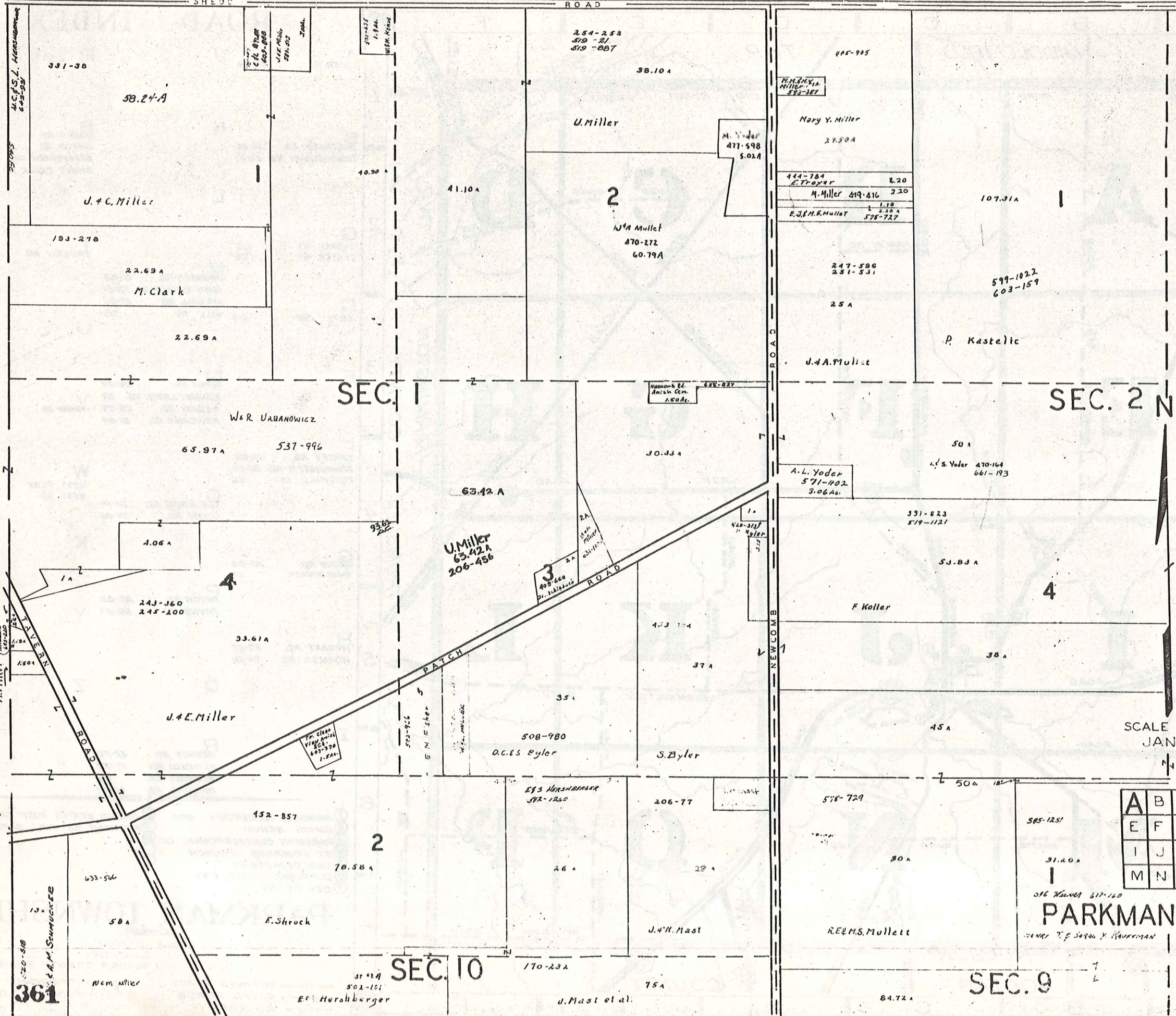
SCALE: 1"=2000'  
 O.J. ROBINSON  
 GEauga COUNTY ENGINEER

--- UNPAVED ROADS  
 = PAVED ROADS  
 - - - RAILROAD

--- TOWNSHIP LINE  
 - - - COUNTY LINE

MIDDLEFIELD TOWNSHIP

TROVY TOWNSHIP



SEC. 2 N

SEC. 1

SEC. 10

SEC. 9

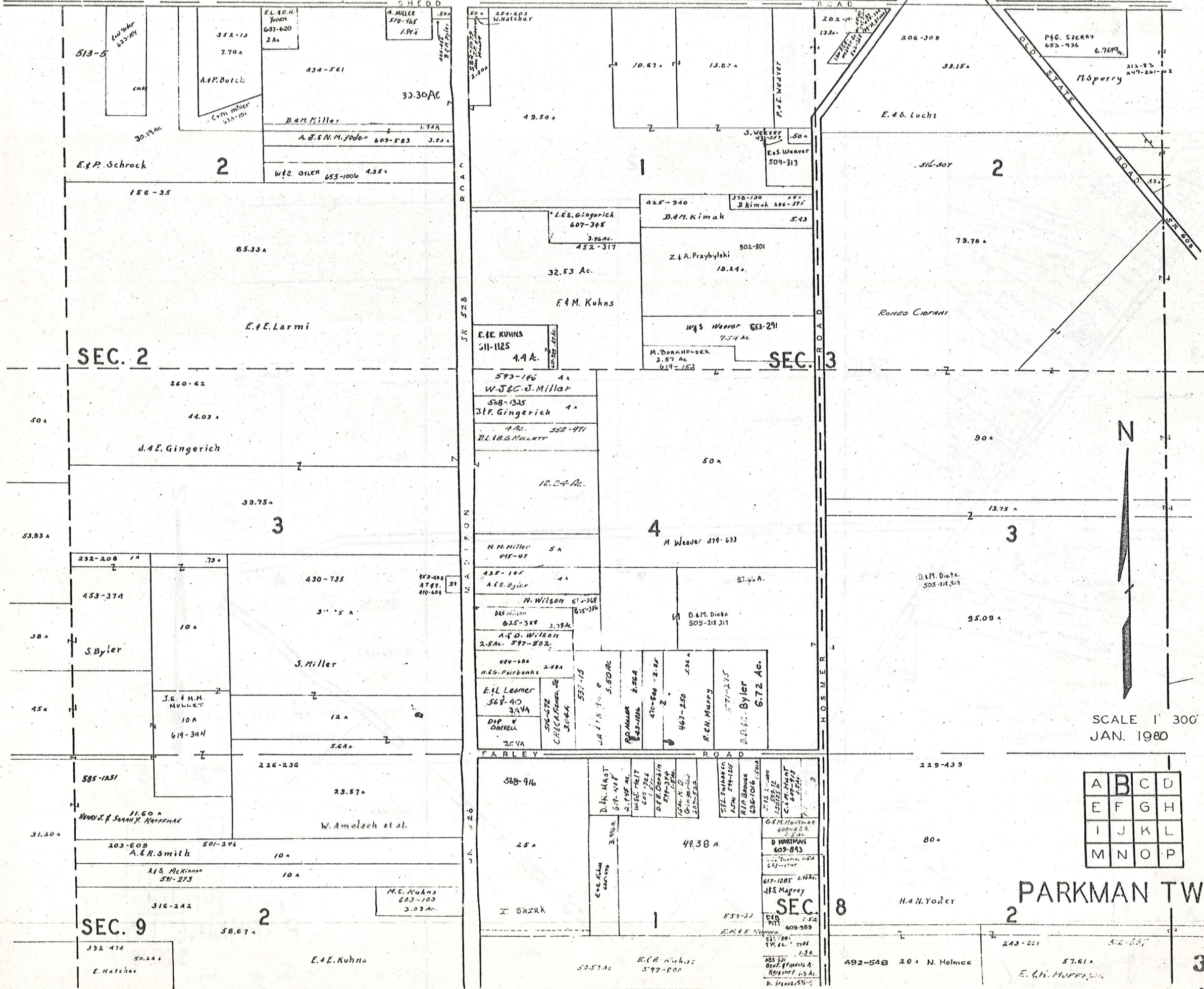
SCALE 300' JAN. 1980

A	B	C	D
E	F	G	H
I	J	K	L
M	N	O	P

PARKMAN TWP.

361

MIDDLEFIELD TOWNSHIP



SEC. 2

SEC. 3

SEC. 9

SEC. 8

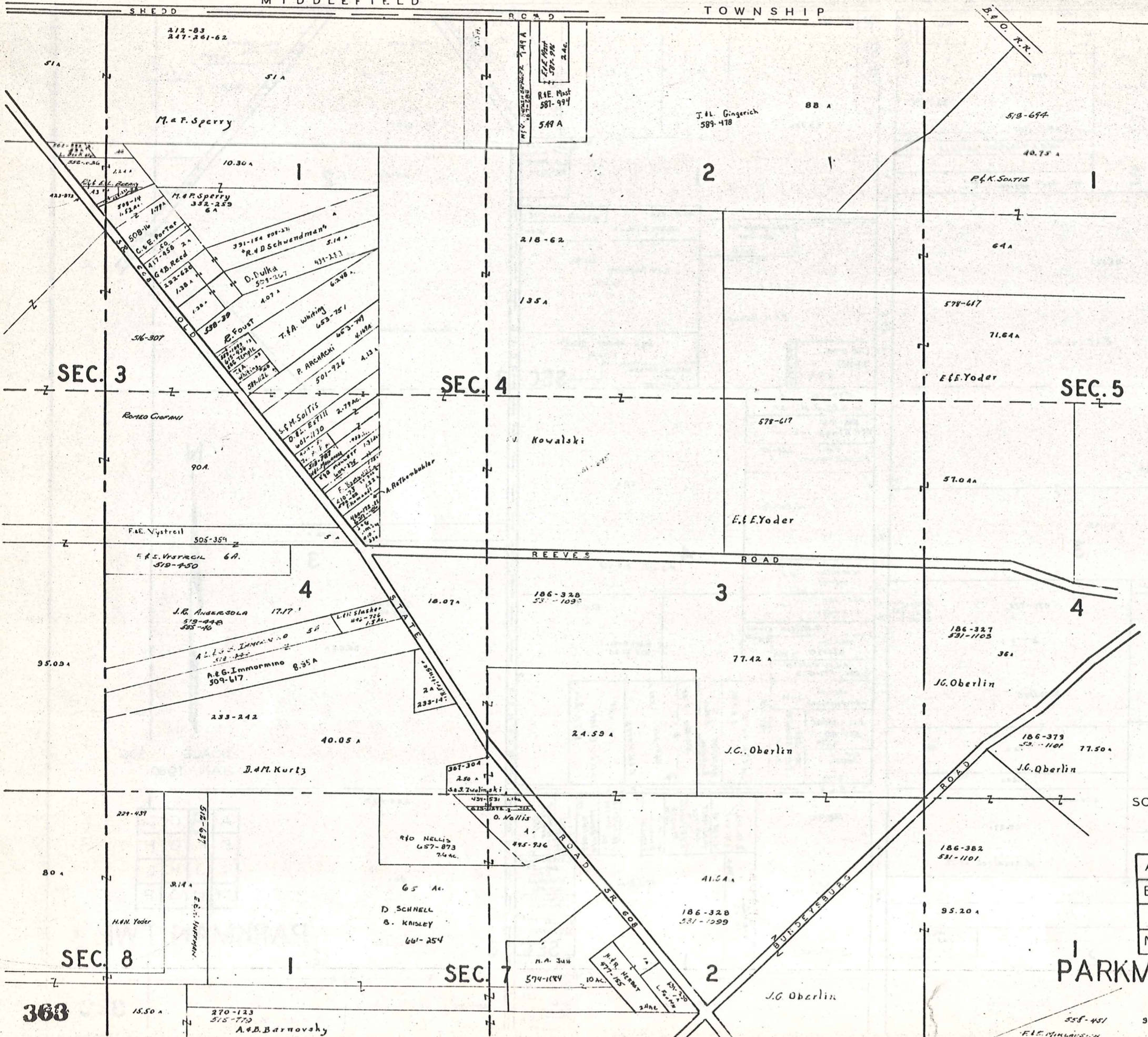
SCALE 1" = 300'  
JAN. 1980

A	B	C	D
E	F	G	H
I	J	K	L
M	N	O	P

PARKMAN TWP.

MIDDLEFIELD

TOWNSHIP



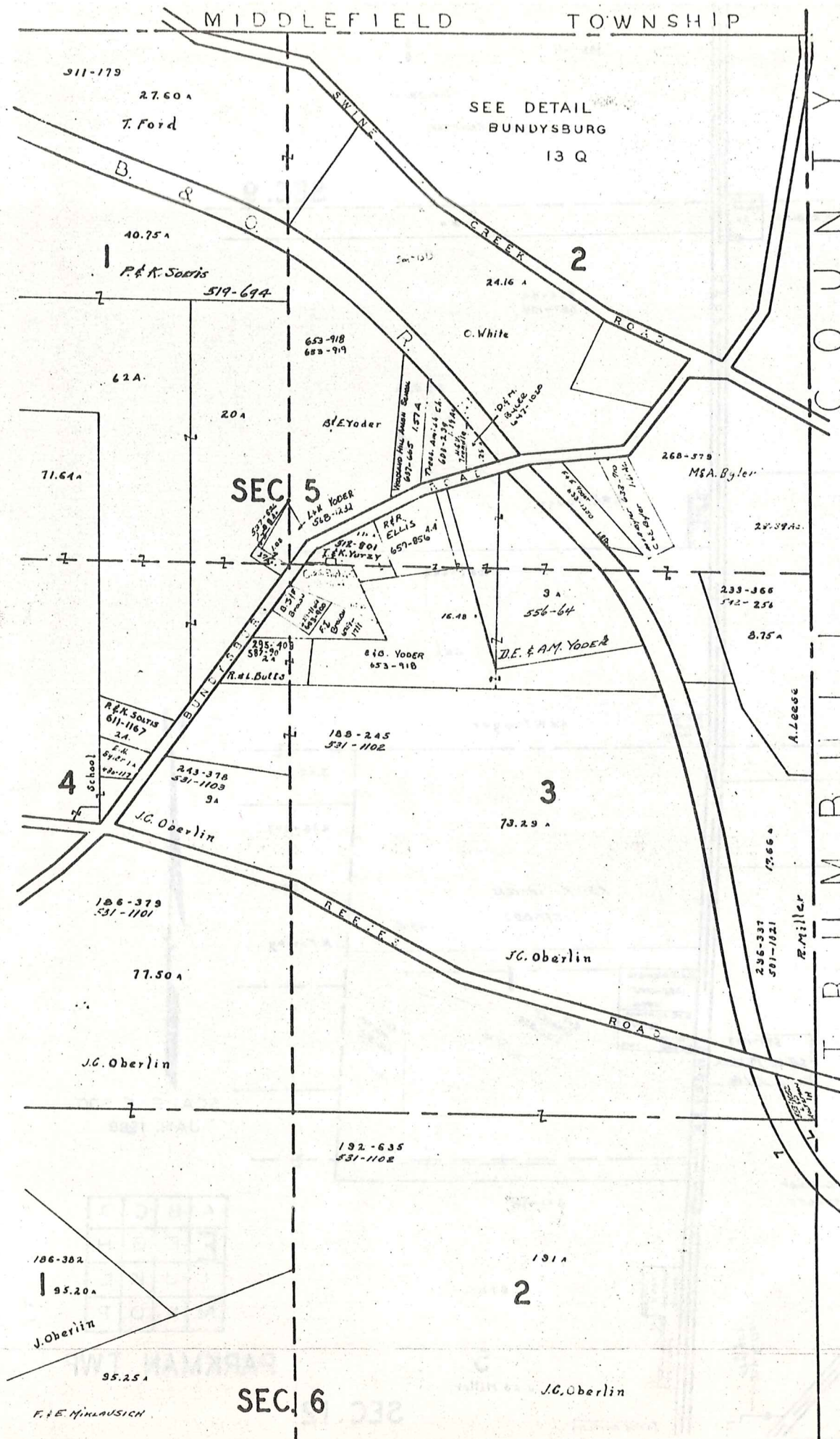
SCALE 1" = 300'  
JAN. 1980

A	B	C	D
E	F	G	H
I	J	K	L
M	N	O	P

PARKMAN TWP.  
SEC. 6

MIDDLEFIELD TOWNSHIP

COUNTY  
BULL  
MILL



SCALE 1" = 300'  
JAN. 1930

A	B	C	D
E	F	G	H
I	J	K	L
M	N	O	P

PARKMAN TWP.

T R O Y T R O Y T R O Y

P

S

H

N

O

W

T

R

O

Y

T

R

O

Y

T

R

O

Y

T

R

O

Y

SEC. 10

SEC. 9

SEC. 11

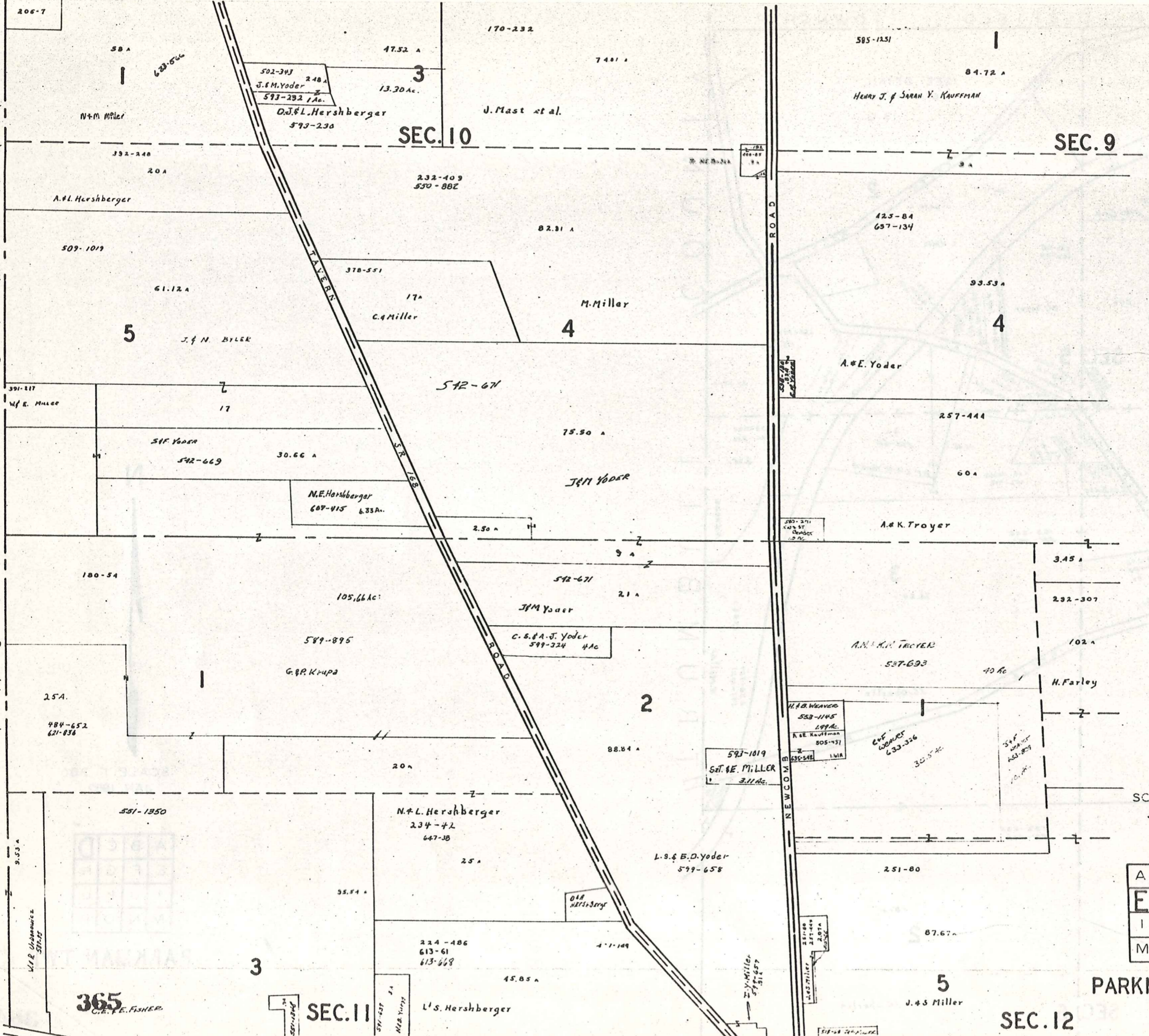
SEC. 12

PARKMAN TWP

N

SCALE 1" = 300'  
JAN. 1980

A	B	C	D
E	F	G	H
I	J	K	L
M	N	O	P



365  
C.E.F. FISHER

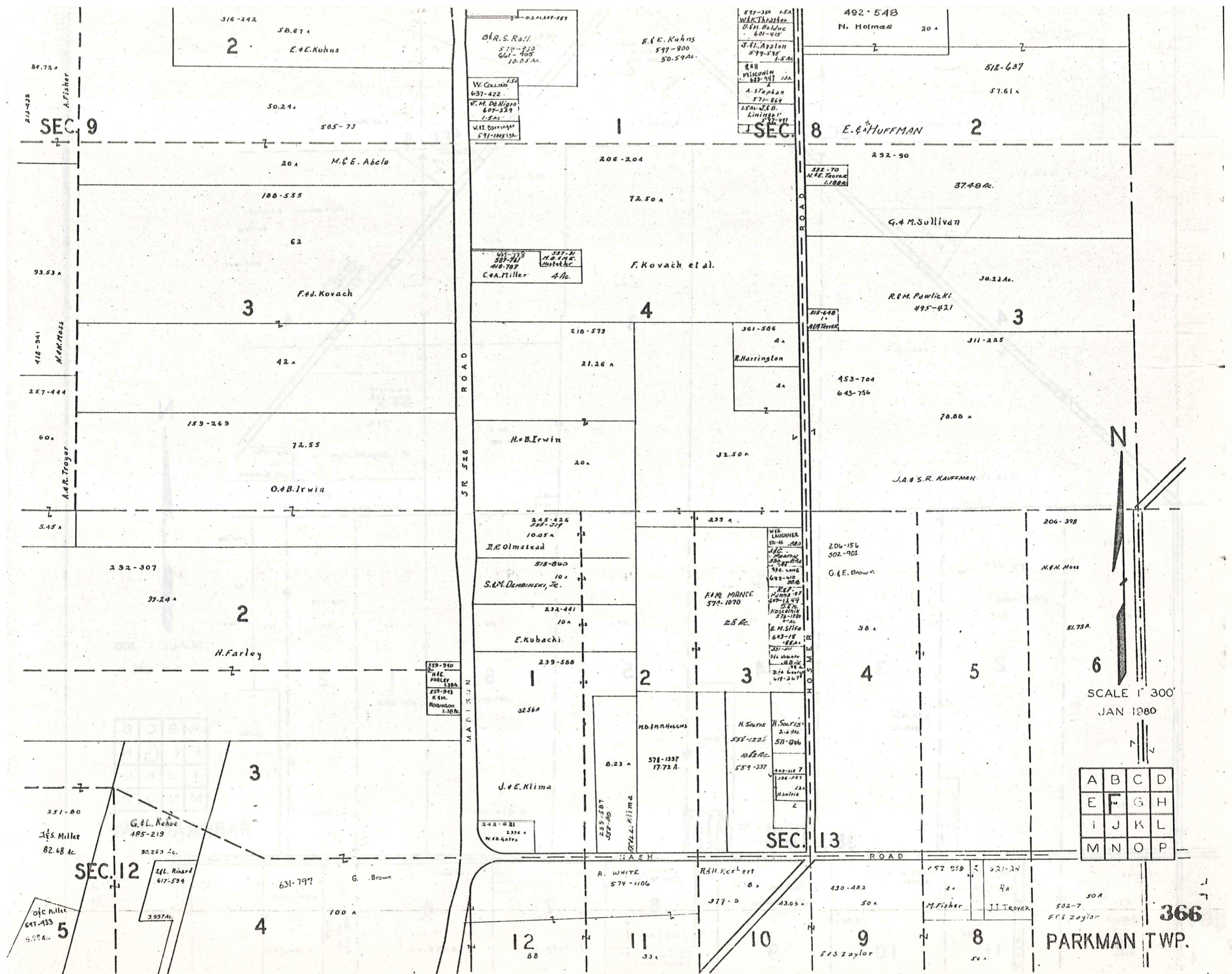
571-1257  
571-1258

571-427  
571-428  
571-429  
571-430  
571-431  
571-432  
571-433  
571-434  
571-435  
571-436  
571-437  
571-438  
571-439  
571-440  
571-441  
571-442  
571-443  
571-444  
571-445  
571-446  
571-447  
571-448  
571-449  
571-450  
571-451  
571-452  
571-453  
571-454  
571-455  
571-456  
571-457  
571-458  
571-459  
571-460  
571-461  
571-462  
571-463  
571-464  
571-465  
571-466  
571-467  
571-468  
571-469  
571-470  
571-471  
571-472  
571-473  
571-474  
571-475  
571-476  
571-477  
571-478  
571-479  
571-480  
571-481  
571-482  
571-483  
571-484  
571-485  
571-486  
571-487  
571-488  
571-489  
571-490  
571-491  
571-492  
571-493  
571-494  
571-495  
571-496  
571-497  
571-498  
571-499  
571-500

571-1019  
571-1020  
571-1021  
571-1022  
571-1023  
571-1024  
571-1025  
571-1026  
571-1027  
571-1028  
571-1029  
571-1030  
571-1031  
571-1032  
571-1033  
571-1034  
571-1035  
571-1036  
571-1037  
571-1038  
571-1039  
571-1040  
571-1041  
571-1042  
571-1043  
571-1044  
571-1045  
571-1046  
571-1047  
571-1048  
571-1049  
571-1050  
571-1051  
571-1052  
571-1053  
571-1054  
571-1055  
571-1056  
571-1057  
571-1058  
571-1059  
571-1060  
571-1061  
571-1062  
571-1063  
571-1064  
571-1065  
571-1066  
571-1067  
571-1068  
571-1069  
571-1070  
571-1071  
571-1072  
571-1073  
571-1074  
571-1075  
571-1076  
571-1077  
571-1078  
571-1079  
571-1080  
571-1081  
571-1082  
571-1083  
571-1084  
571-1085  
571-1086  
571-1087  
571-1088  
571-1089  
571-1090  
571-1091  
571-1092  
571-1093  
571-1094  
571-1095  
571-1096  
571-1097  
571-1098  
571-1099  
571-1100

571-1145  
571-1146  
571-1147  
571-1148  
571-1149  
571-1150  
571-1151  
571-1152  
571-1153  
571-1154  
571-1155  
571-1156  
571-1157  
571-1158  
571-1159  
571-1160  
571-1161  
571-1162  
571-1163  
571-1164  
571-1165  
571-1166  
571-1167  
571-1168  
571-1169  
571-1170  
571-1171  
571-1172  
571-1173  
571-1174  
571-1175  
571-1176  
571-1177  
571-1178  
571-1179  
571-1180  
571-1181  
571-1182  
571-1183  
571-1184  
571-1185  
571-1186  
571-1187  
571-1188  
571-1189  
571-1190  
571-1191  
571-1192  
571-1193  
571-1194  
571-1195  
571-1196  
571-1197  
571-1198  
571-1199  
571-1200

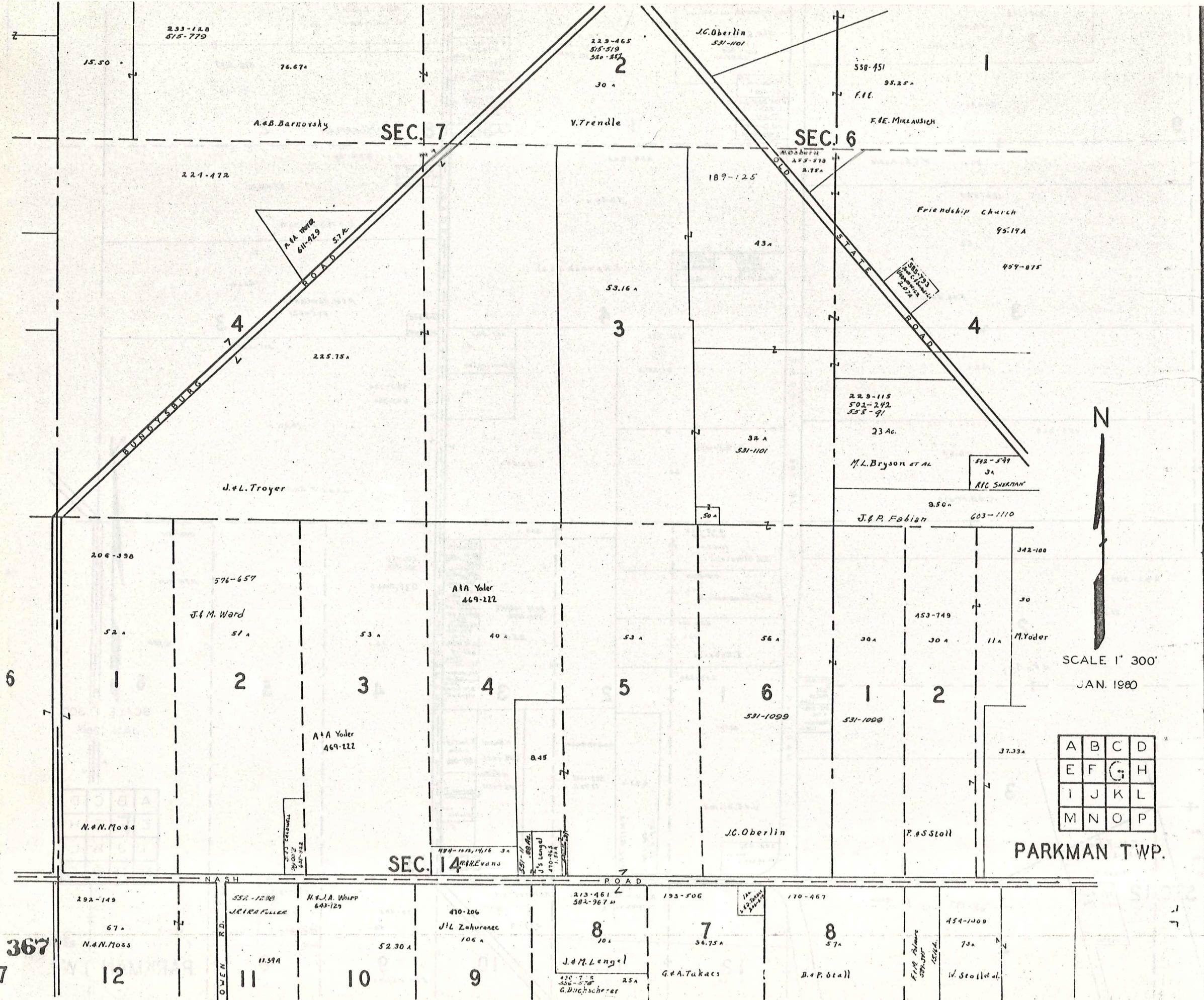
571-1201  
571-1202  
571-1203  
571-1204  
571-1205  
571-1206  
571-1207  
571-1208  
571-1209  
571-1210  
571-1211  
571-1212  
571-1213  
571-1214  
571-1215  
571-1216  
571-1217  
571-1218  
571-1219  
571-1220  
571-1221  
571-1222  
571-1223  
571-1224  
571-1225  
571-1226  
571-1227  
571-1228  
571-1229  
571-1230  
571-1231  
571-1232  
571-1233  
571-1234  
571-1235  
571-1236  
571-1237  
571-1238  
571-1239  
571-1240  
571-1241  
571-1242  
571-1243  
571-1244  
571-1245  
571-1246  
571-1247  
571-1248  
571-1249  
571-1250  
571-1251  
571-1252  
571-1253  
571-1254  
571-1255  
571-1256  
571-1257  
571-1258  
571-1259  
571-1260  
571-1261  
571-1262  
571-1263  
571-1264  
571-1265  
571-1266  
571-1267  
571-1268  
571-1269  
571-1270  
571-1271  
571-1272  
571-1273  
571-1274  
571-1275  
571-1276  
571-1277  
571-1278  
571-1279  
571-1280  
571-1281  
571-1282  
571-1283  
571-1284  
571-1285  
571-1286  
571-1287  
571-1288  
571-1289  
571-1290  
571-1291  
571-1292  
571-1293  
571-1294  
571-1295  
571-1296  
571-1297  
571-1298  
571-1299  
571-1300



A	B	C	D
E	F	G	H
I	J	K	L
M	N	O	P

366

PARKMAN TWP.



SCALE 1" = 300'  
 JAN. 1980

A	B	C	D
E	F	G	H
I	J	K	L
M	N	O	P

PARKMAN TWP.

367  
 7

12

11

10

9

8

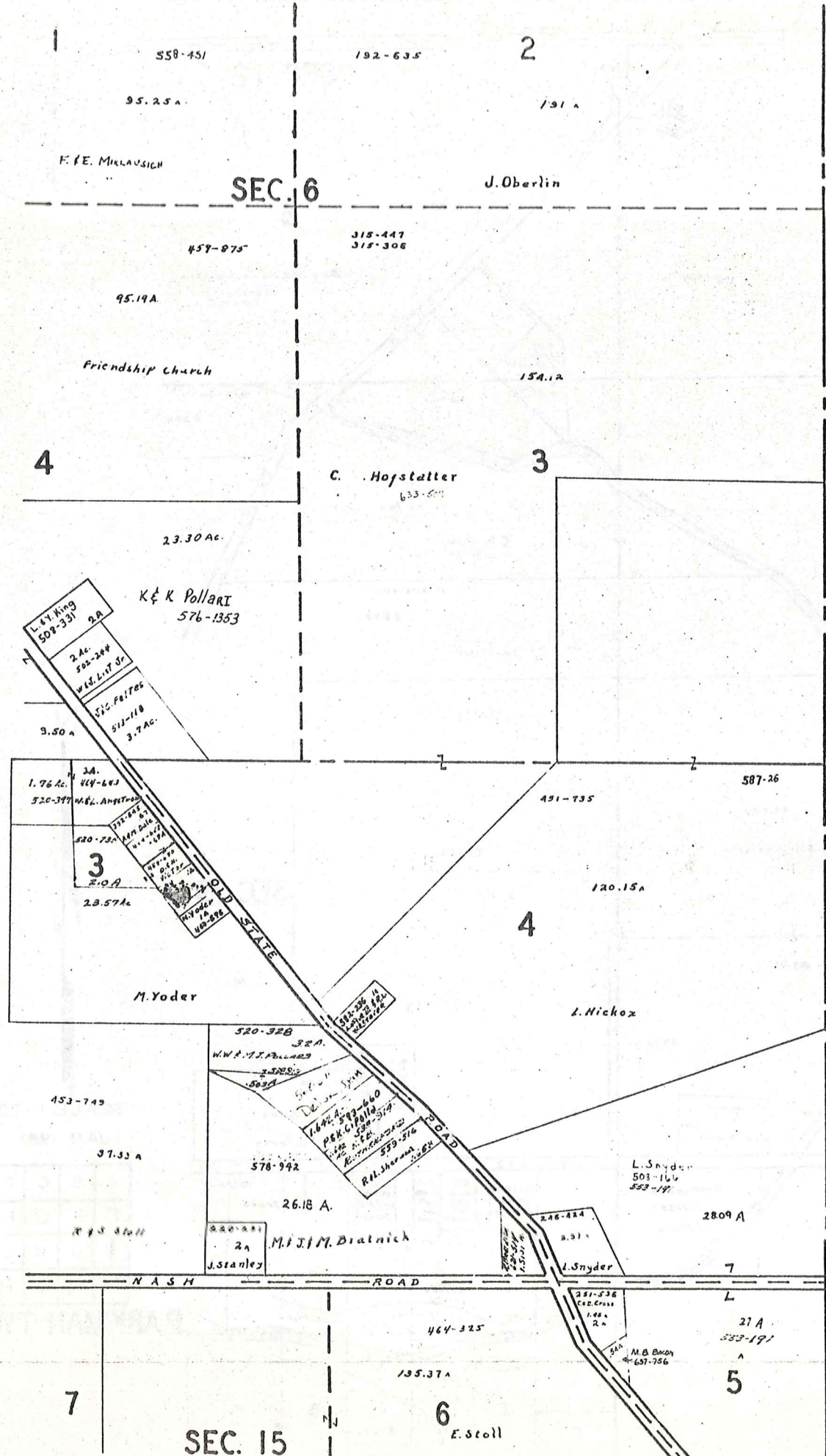
7

8

7

11

12



T  
R  
U  
M  
B  
U  
L  
L  
C  
O  
U  
N  
T  
Y



SCALE 1" = 300'  
JAN. 1980

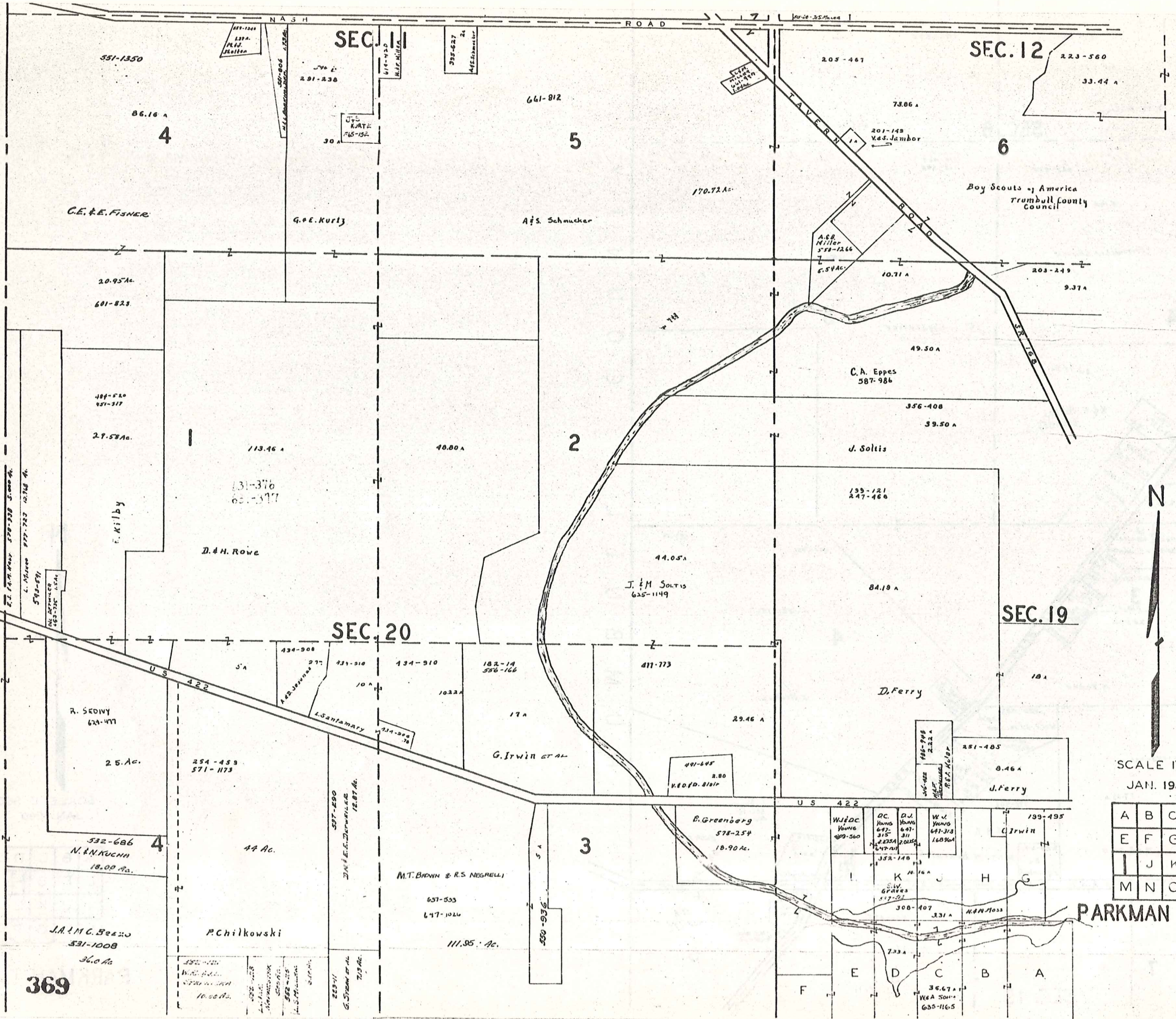
A	B	C	D
E	F	G	H
I	J	K	L
M	N	O	P

368

PARKMAN TWP.

T R O Y T O W N S H I P

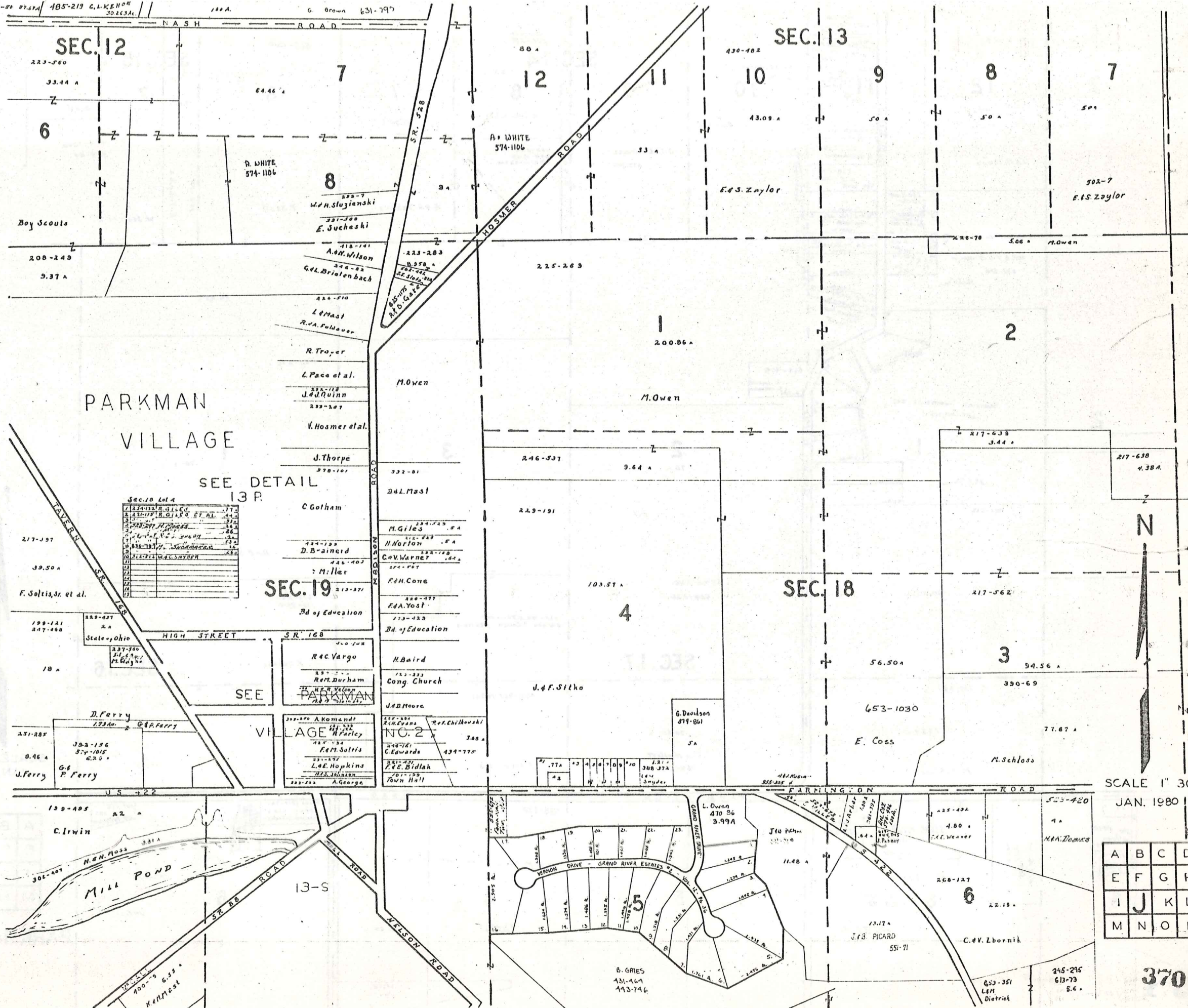
NASH ROAD



SCALE 1" = 300'  
JAN. 1980

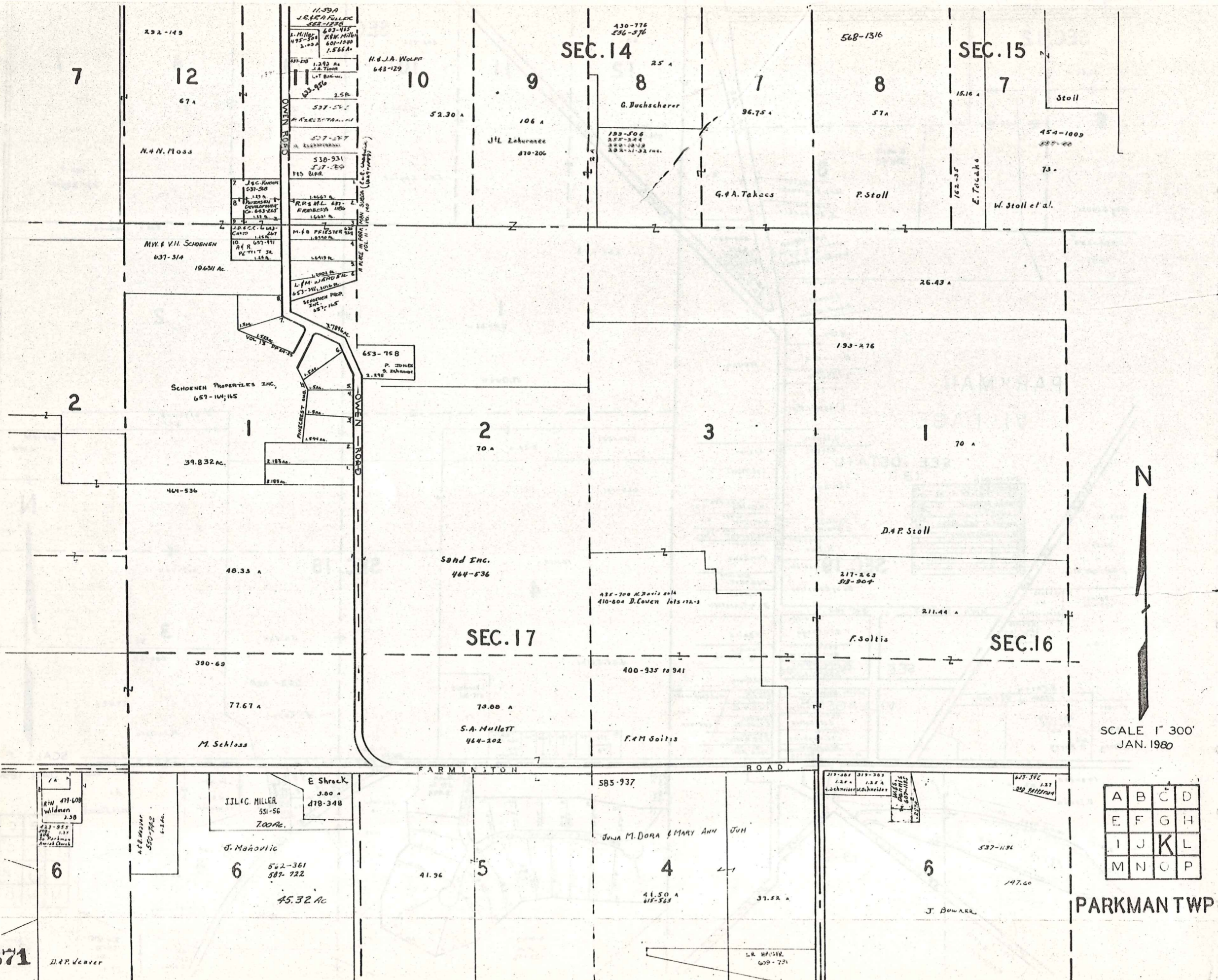
A	B	C	D
E	F	G	H
I	J	K	L
M	N	O	P

PARKMAN TWP.



SCALE 1" = 30'  
JAN. 1980

A	B	C	D
E	F	G	H
I	J	K	L
M	N	O	P



SCALE 1" = 300'  
JAN. 1980

A	B	C	D
E	F	G	H
I	J	K	L
M	N	O	P

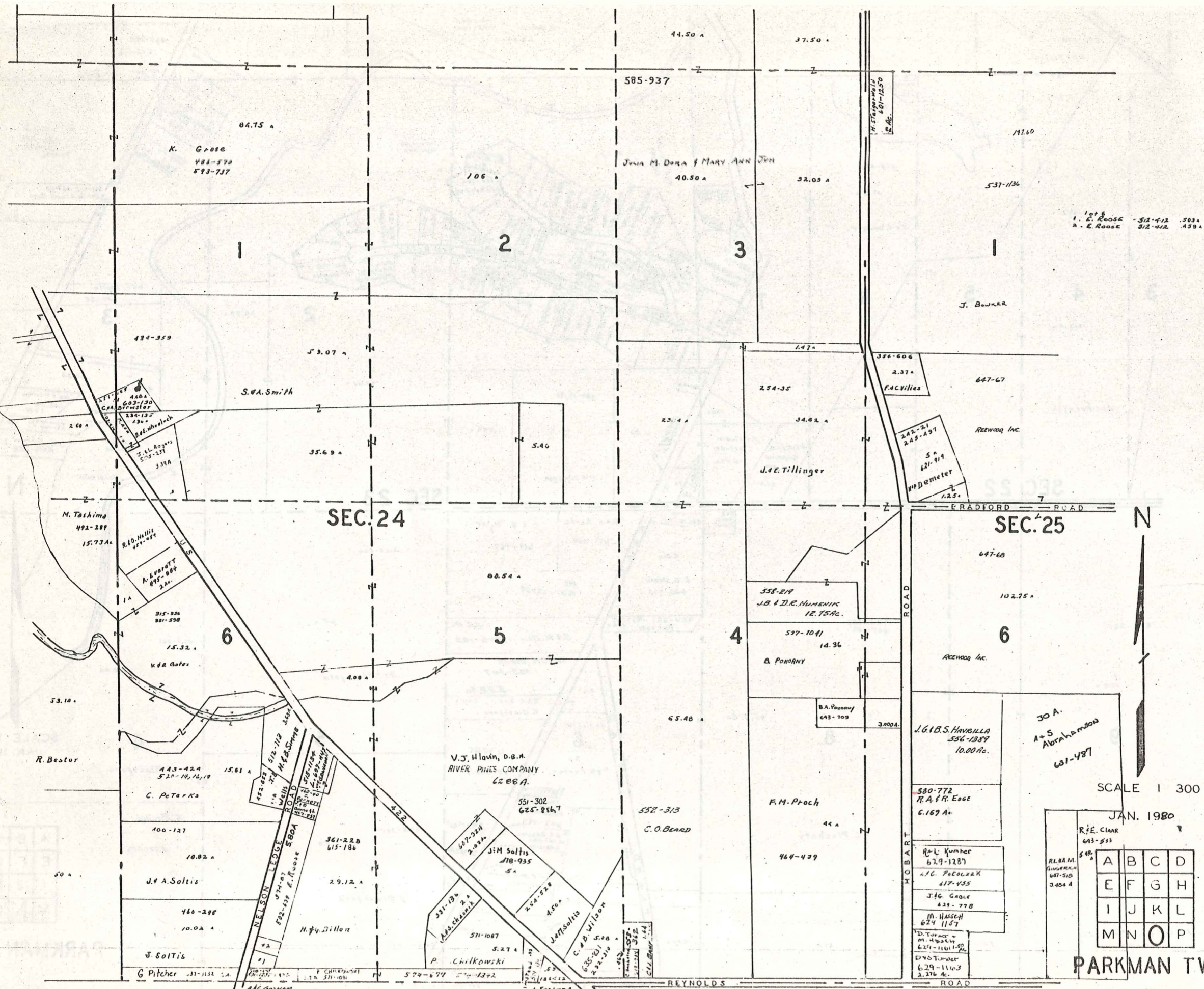
PARKMAN TWP

371 D.A.P. Weaver









1st E  
 1. E. ROOSE - 5/2-4/12 - 503A  
 2. E. ROOSE - 5/2-4/12 - 459A

SEC. 24

SEC. 25

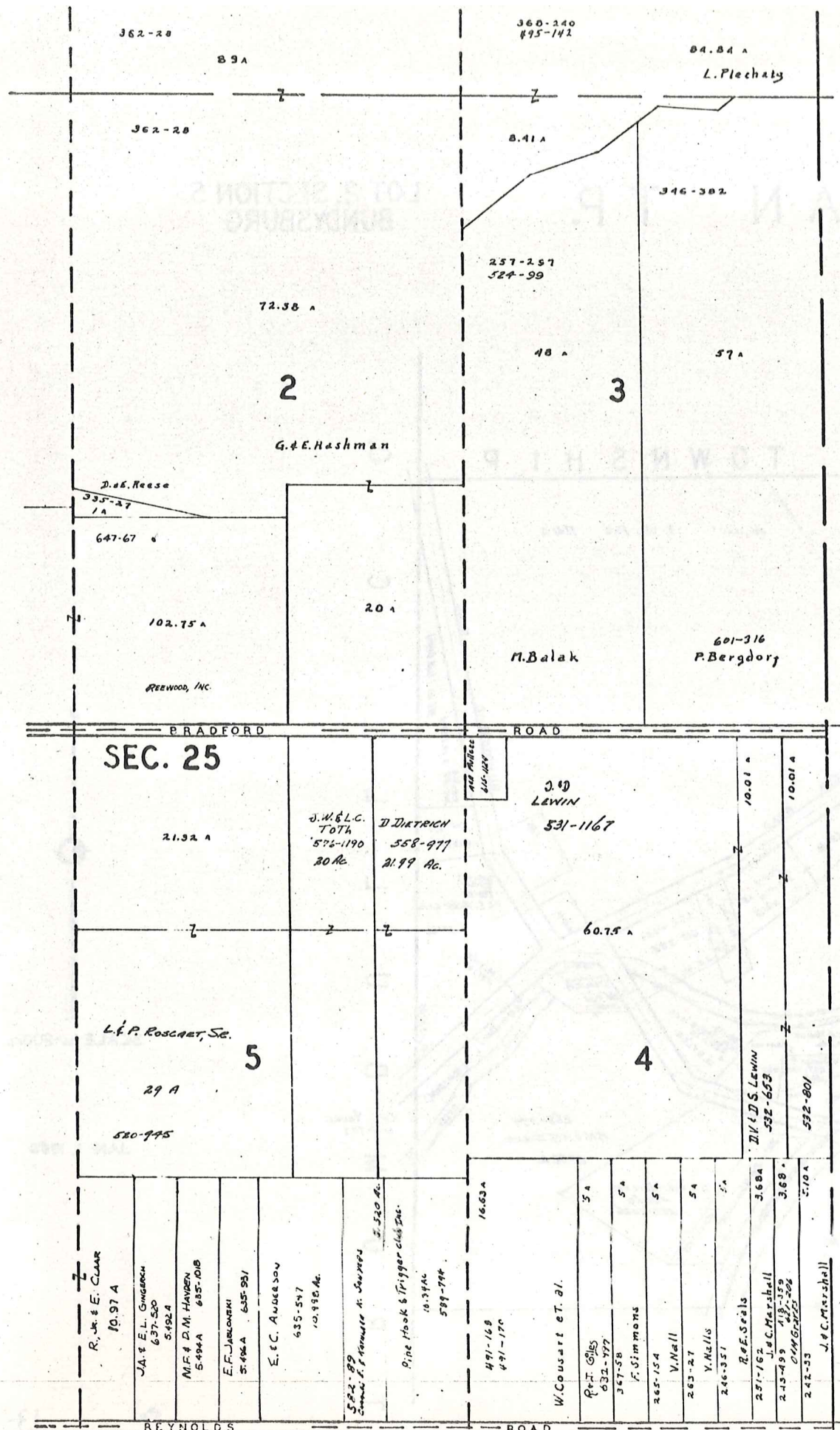


SCALE 1 300

JAN. 1980

A	B	C	D
E	F	G	H
I	J	K	L
M	N	O	P

PARKMAN TWP.



T R U M B U L L C O U N T Y

SEC. 25

BRADFORD ROAD

PORTAGE COUNTY

R. J. & E. CLAR  
10.97 A

J.A. & E.L. GINGERICH  
637-500  
5.492 A

M.F. & D.M. HAYDEN  
5494A 685-1018

E.F. JABLONSKI  
5.496 A 635-931

E. & C. ANDERSON  
635-547  
10.998 Ac.

5.522-89  
SANDY F. HANSEN & SONS  
5.520 Ac.

Pine Hook & Trigger Club Inc.  
10.34 Ac.  
589-794

491-169  
491-170

16.63 A

W. Cousart et al.

P.F. GILES  
632-777

367-58  
F. Simmons

265-154  
V. Nell

263-27  
Y. Nellis

246-357  
R. & E. Stalls

291-162  
J.C. Marshall

243-499  
C.H. Marshall

242-33  
J.C. Marshall

21.32 A

J.M. & L.C. TOTH  
575-1190  
20 Ac

D. DITTRICH  
558-977  
21.99 Ac.

J.D. LEWIN  
531-1167

60.75 A

L.P. Roscaert, Sr.

29 A

520-745

102.75 A

REWOOD, INC.

20 A

M. Balak

601-316  
P. Bergdorf

362-28

89 A

362-28

360-240  
495-141

8.41 A

84.84 A

L. Plechaty

72.58 A

2

G.E. Hashman

48 A

3

57 A

D. & E. Reese

335-27  
1 A

647-67

257-257  
524-99

346-382

BRADFORD ROAD

ROAD

REYNOLDS ROAD



SCALE 1" = 300'  
JAN. 1980

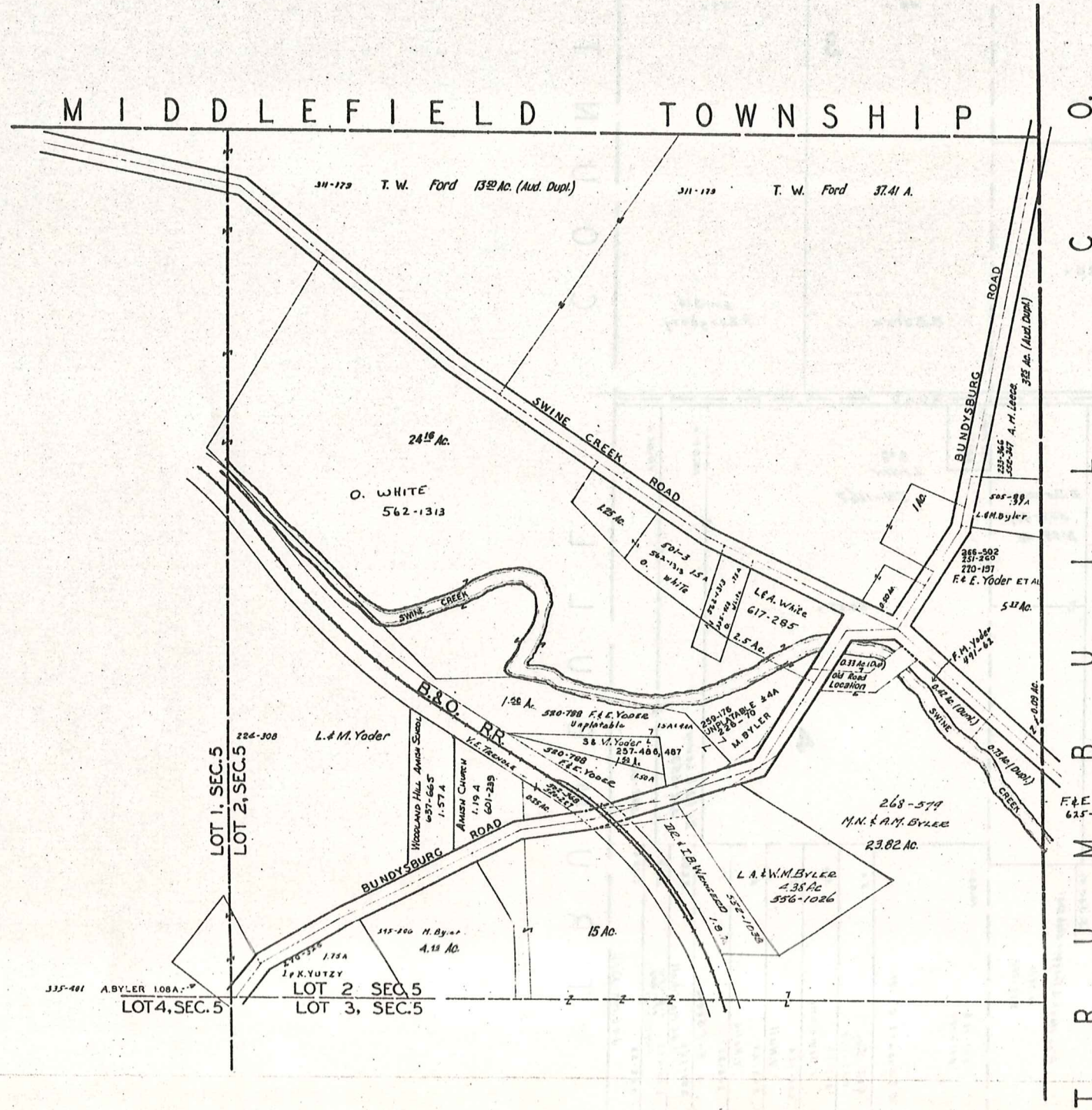
A	B	C	D
E	F	G	H
I	J	K	L
M	N	O	P

PARKMAN TWP  
376

LOT 2, SECTION 5  
BUNDYSBURG

# PARKMAN T.P.

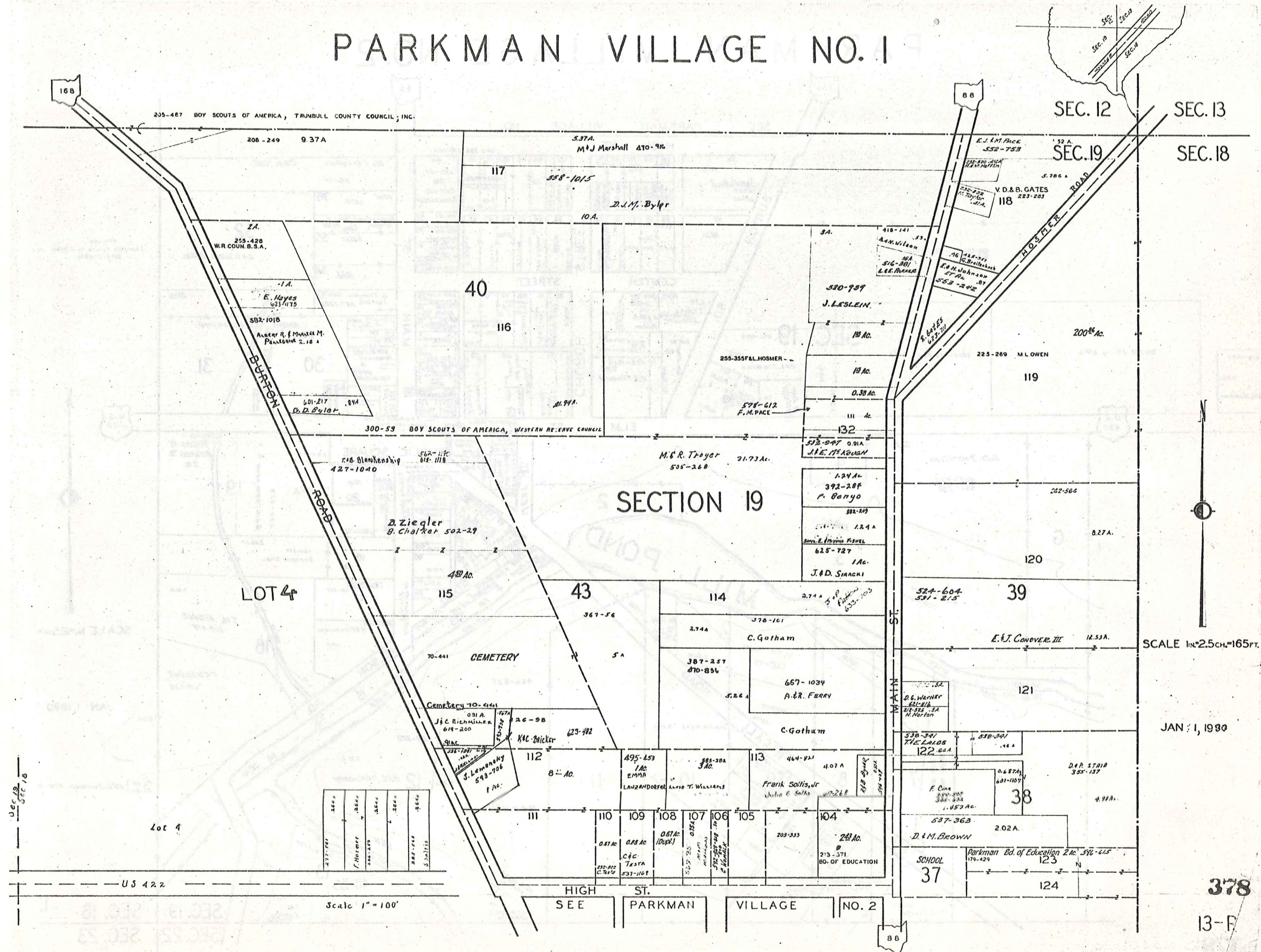
LOT 2, SECTION 5  
BUNDYSBURG



SCALE 1 in. = 200 FT.

JAN 1, 1980

# PARKMAN VILLAGE NO. 1



SEC. 12 SEC. 13  
SEC. 19 SEC. 18

SECTION 19

SCALE 1"=25CH.=165FT.

JAN 1, 1930

US 422

Scale 1"=100'

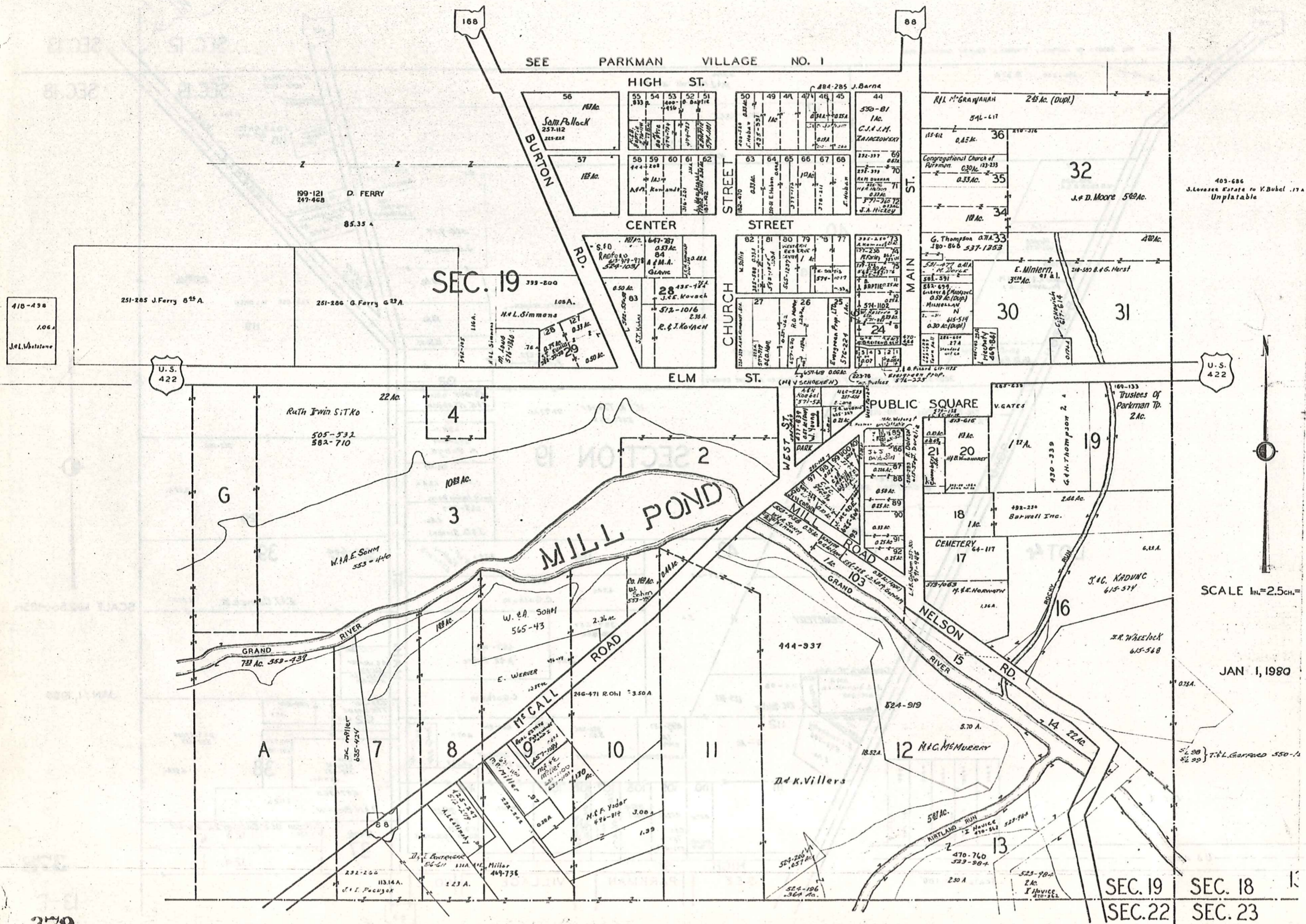
HIGH ST. PARKMAN VILLAGE NO. 2

SCHOOL 37

Parkman Bd. of Education 2 Ac. 396-615

378  
13-F

# PARKMAN VILLAGE NO. 2

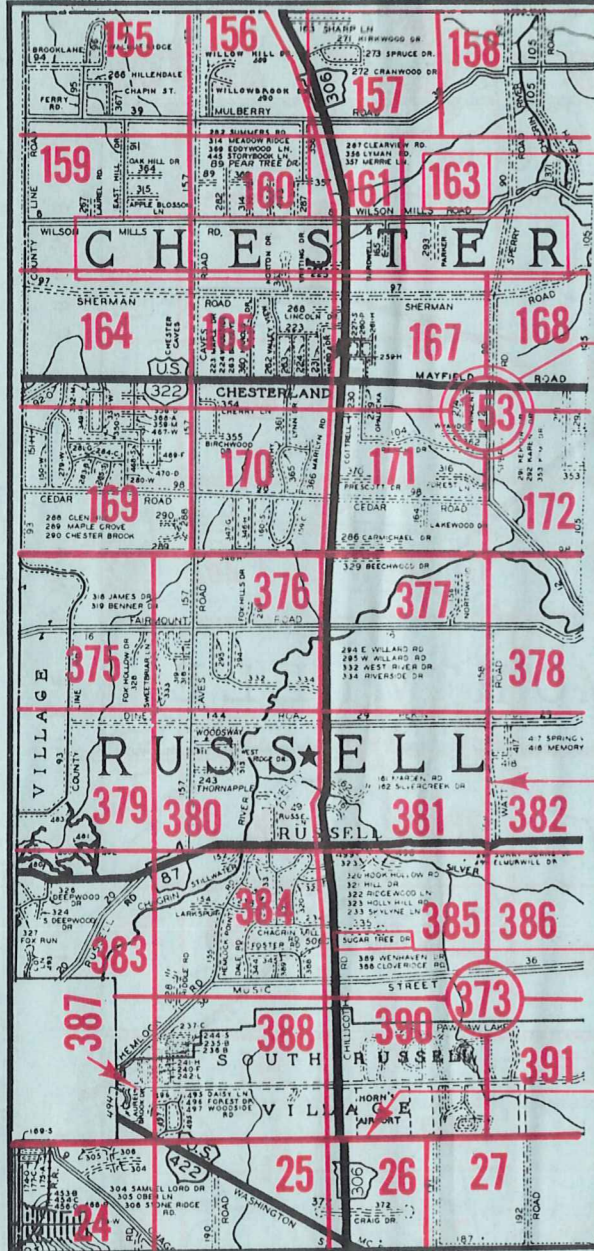


SCALE 1 in. = 2.5 ch.

JAN 1, 1980

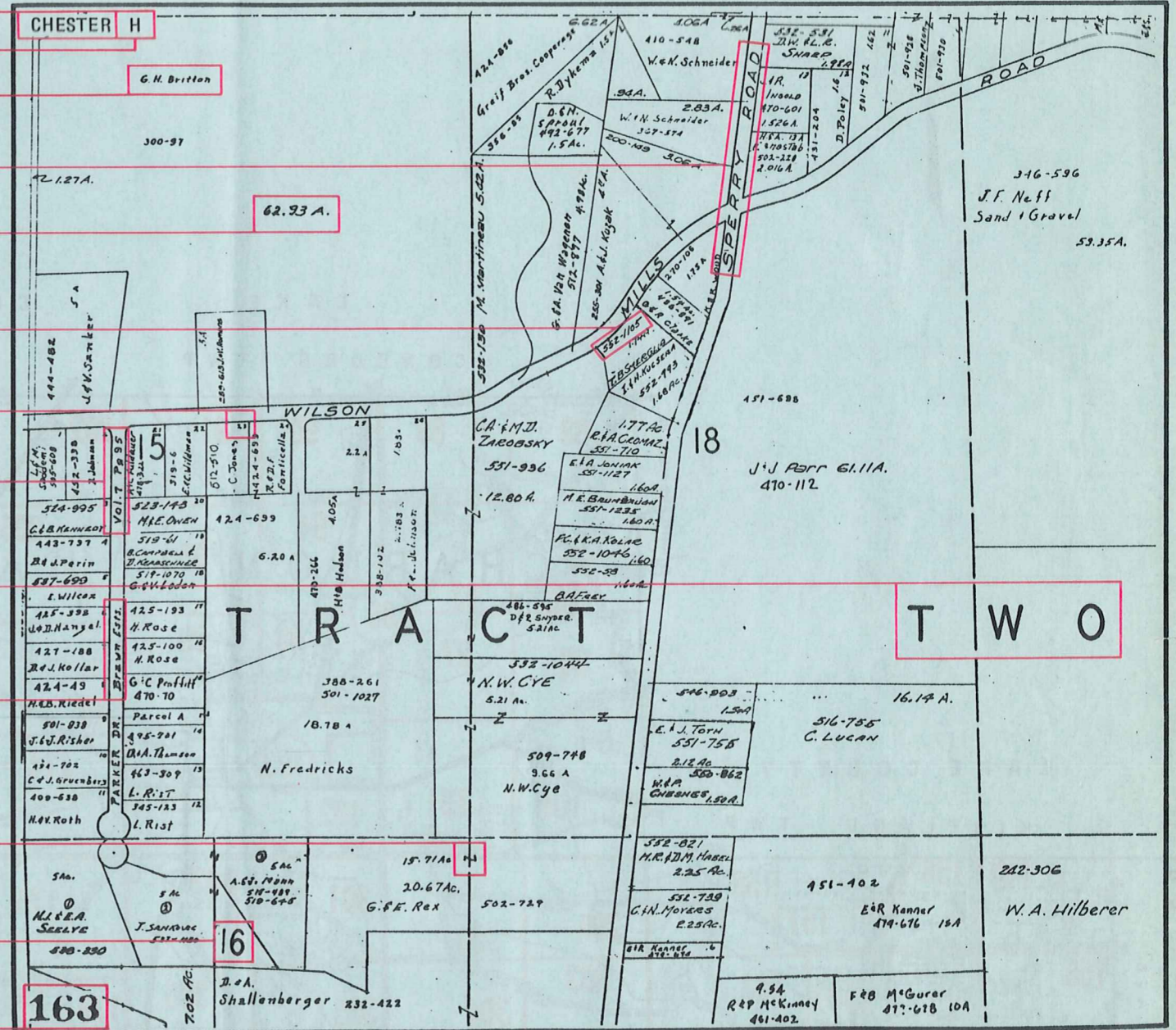
# Explanation and Use Sheet for Geauga County, Ohio

SAMPLE (PARTIAL) COUNTY INDEX MAP



- Township Name
- Map Page Number (Or Letter)
- Owners Name
- Street Name
- Acreage
- Municipality Index Beginning Atlas Page Number
- Deed Book & Page
- Subdivision Lot Number
- Plat Book & Page
- Tract Number
- Atlas Page Boundary
- Subdivision Name
- Street Name
- Denotes Continuous Ownership
- Municipality Index Atlas Page Boundary
- Tract Lot Number
- Atlas Page Number

SAMPLE (PARTIAL) MAP PAGE



## USE OF THE MAP VOLUME

1. LOCATE THE GENERAL AREA OF INTEREST ON THE COUNTY INDEX MAP, ATLAS PAGE 'B'.
2. **A. IF PROPERTY IS IN A TOWNSHIP**, NOTE THE ATLAS PAGE NUMBER. TURN TO THE PAGE INDICATED AND LOCATE SPECIFIC PARCEL OF INTEREST.  
NOTE: ON SOME MAPS YOU MAY BE REFERRED TO A DETAIL SHEET SHOWING AN ENLARGEMENT OF THE AREA. THESE MAPS ARE FOUND AT THE END OF THE REGULAR MAP PAGES IN EACH TOWNSHIP EITHER IN ALPHABETICAL OR NUMERICAL SEQUENCE.
3. **B. IF PROPERTY IS IN A MUNICIPALITY**, REFER TO THE TABLE OF CONTENTS, ATLAS PAGE 'C', AND NOTE THE BEGINNING ATLAS PAGE NUMBER FOR THE MUNICIPALITY OF INTEREST.
  - (1) TURN TO THE PAGE INDICATED. ON THIS PAGE WILL APPEAR AN INDEX MAP FOR THAT MUNICIPALITY.
  - (2) LOCATE SPECIFIC AREA OF INTEREST AND NOTE THE MAP PAGE NUMBER.  
NOTE: DO NOT CONFUSE THE MAP PAGE NUMBER WITH THE ATLAS PAGE NUMBER IN THESE MUNICIPALITIES.
  - (3) FOLLOW EITHER ALPHABETICAL OR NUMERICAL SEQUENCE TO THE MAP PAGE INDICATED AND LOCATE SPECIFIC PARCEL OF INTEREST.